



The CENTURION and CENTSYS logos, all product and brand names in this document that are accompanied by the TM symbol are trademarks of Centurion Systems (Pty) Ltd, in South Africa and other territories. All rights are reserved. We invite you to contact us for further details.

Centurion Systems (Pty) Ltd reserves the right to change any product without prior notice.

After Hours International Technical Support Call Centre
 +27 11 699 2481 (16:00 to 02:00 - Australian Eastern Time)

Call: 1300 CENTSYS (1300 236 879)

www.centsys.com.au

Call Technical Support: +27 11 699 2481
 from 08h00 to 17h00 (UTC+2)

Head Office: +27 11 699 2400

Call Centurion Systems (Pty) Ltd - South Africa

Subscribe to the newsletter:
 www.centsys.com/subscribe

centurion.systems

@askcenturion

YouTube.com/centurionsystems

facebook.com/centurionsystems

Connect with us on:

www.centsys.com



GSM DEVICES

G-ULTRA QUICK GUIDE



G-ULTRA

1. Important Safety Instructions

- Do not install this product near the DOSS sensor inside the gate motor housing or near the remote receiver.
- Do not install this product near any sensitive electrical components.
- All installation, repair, and service work to this product must be done by a suitably qualified person.
- Do not in any way modify the components of the system.
- Do not install the equipment in an explosive atmosphere: the presence of flammable gas or fumes is a serious danger to safety.
- Do not leave packing materials (plastic, polystyrene, etc.) within reach of children as such materials are potential sources of danger.
- Dispose of all waste products like packing materials, according to local regulations.
- Centurion Systems (Pty) Ltd does not accept any liability caused by improper use of the product, or for use other than that for which the GSM system was intended.
- This product was designed and built strictly for the use indicated in this documentation. Any other use, not expressly indicated here, could compromise the service life/operation of the product and/or be a source of danger.
- Anything not expressly specified in these instructions is not permitted.

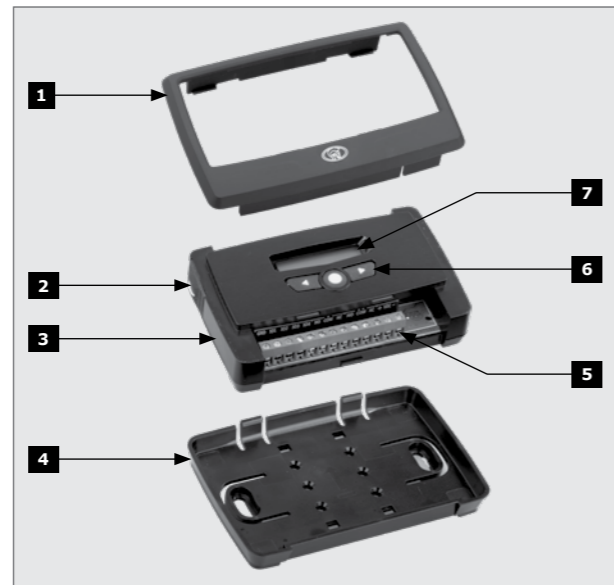
- This icon indicates tips and other information that could be useful during the installation.
- This icon denotes variations and other aspects that should be considered during installation.

2. Technical Specifications

Supply Voltage Range	11-24V DC
Maximum Current Draw	300mA @ 12V DC
Input/output Current Rating	50mA (Open Collector)
Relay Contact Current Rating	1A, 30V AC/DC (Resistive)
Input Sense Voltage Range	0-24V DC (0-1.6V Low-input State, 5V-24V High-input State)
Network Provider	MTN (South Africa only)
Number of Configurable Input/output Channels	4
Number of Relays	2
Model Options	GSM 2G: 850/900/1800/1900MHz (EDGE) GSM 3G: 900/2100MHz (EDGE) 900/2100MHz (UMTS) GSM 3G PENTA: 800/850/900/1900/2100MHz (UMTS) GSM 4G/LTE-CAT1: 900/2100MHz
Degree of protection	IP40

TABLE 1

3. Product Identification

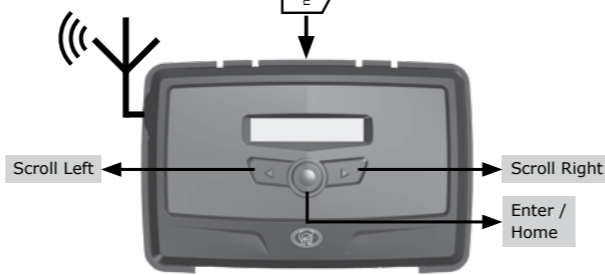


- Fascia
- External Antenna Cover
- Main G-ULTRA Unit
- Mounting Plate
- Terminal Blocks
- Navigation panel
- LCD Screen

FIGURE 1

Optional: External Antenna

NOTE:
 The **Internal Antenna** is selected by default.



4. LCD Interface

Table 2 below lists the information shown on the different screens found on the LCD interface. The left and right scroll buttons are used to toggle between the different screens.

	Home Screen Network Name or Phone Number Applicable to Incoming / Outgoing SMS or Call. Network Signal Strength Connected to Internet Connected to G-WEB Device has Error Condition Incoming SMS Outgoing SMS Incoming Phone Call Events Outgoing Phone Call Events
	IO Status Screen Input: Deactivated ("E" = Input event reached) Input: Activated (pulled to ground) Output: Off Output: On (pulling to ground)
	Output Status Screen Relay X is Switched OFF and the Normally-Closed and Common Contacts are connected. Relay X is Switched ON and the Normally-Open and Common Contacts are connected. X = 1 or 2
	Voltage/Firmware/Date & Time Screen Supply Voltage Firmware Version Time Date
	Phone Number Screen Device SIM Phone Number.
	Airtime Balance Screen Outgoing Call Credits Outgoing SMS Credits
	GSM Antenna Selected Screen Internal GSM Antenna Selected (default). External GSM Antenna Selected (connect own Antenna to SMA connector). Press Enter to change between Internal and External Antennas.

	Gate Status Screen Gate Closed Gate Opening Gate Open Gate Status Warning
	SIM Screen SIM PIN OK SIM PIN Incorrect SIM Error
	IMEI Screen Displays the device's IMEI number
	Device Reset Refresh the connection to G-WEB or restore the device to default factory settings (See Section 5).

TABLE 2

5. Syncing and Factory Reset

	From the main menu, scroll left using the direction buttons until "Device Reset" shows on the screen. Press the enter/home button to enter the sub-menu.
	Re-sync (sub-menu) Re-sync will refresh the connection of the device to G-WEB, and will not erase any settings. Push the enter/home button to confirm a re-sync, if the current settings are still desired.
	Factory Reset (sub-menu) Factory reset will restore the device to factory settings. Press the enter/home button to confirm a factory reset. WARNING! This will erase all settings, and restore the device to its original factory state!
	Back (sub-menu) Press enter/home button to return to main menu.
	Confirmation screen Confirm or decline proceeding with factory defaulting.

TABLE 3

6. Configurations

6.1. Removing the Mounting Plate and Fascia

To access the terminal blocks of the G-ULTRA, the back plate and fascia need to be removed. Follow the instructions below to do this.

6.1.1. Removing the Mounting Plate

Gently pull the two clips at the back, backward to release the main G-ULTRA unit, and lift the unit out of the mounting plate.

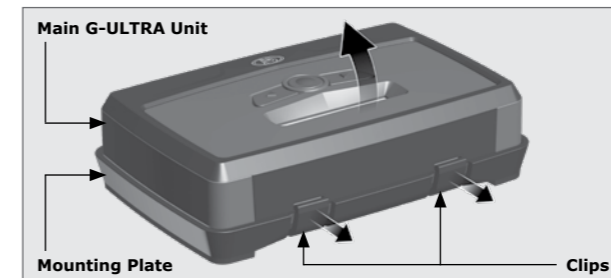


FIGURE 2

6.1.2. Removing the Fascia

The fascia can be removed by inserting the tips of one's fingers into the slots (as shown in Figures 3 and 4), and pulling outward and upward. The fascia should pop off without effort.

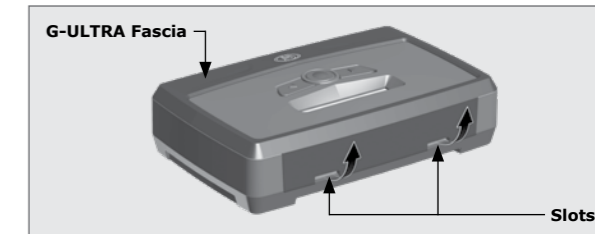


FIGURE 3

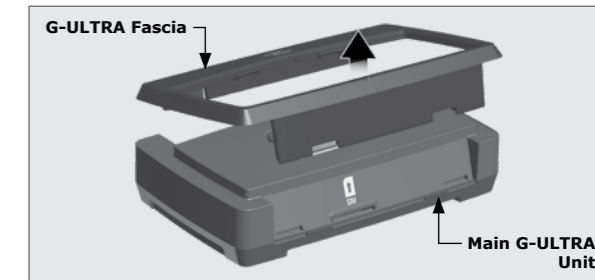


FIGURE 4

- Reverse the procedure under Section 6.1 to re-assemble the G-ULTRA.

6.2. Installation

6.2.1. Wall-mounting

The Mounting Plate is used to mount the G-ULTRA device to a wall. Use four screws with wall anchors (not supplied) to secure Mounting Plate.

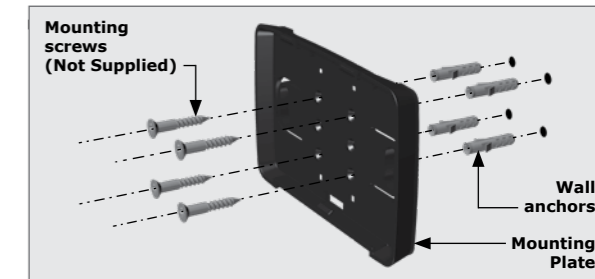


FIGURE 5

Clip the G-ULTRA main unit into the Mounting plate after it has been secured to the wall; a 'click' will be heard if done correctly.

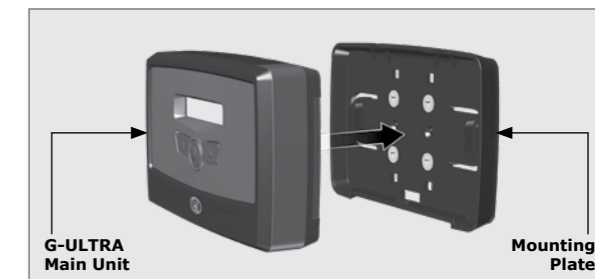


FIGURE 6

GND	IO1	IO2	IO3	IO4	NO	COM	NC	NO	COM	NC	+ VDC	-

GND	Ground
IO1	Input / Output 1 (Default: Output)
IO2	Input / Output 2 (Default: Output)
IO3	Input / Output 3 (Default: Output)
IO4	Input / Output 4 / Gate Status Input (Default: Output)
NO	Relay 1 Normally-open
COM	Relay 1 Common
NC	Relay 1 Normally-closed
NO	Relay 2 Normally-open
COM	Relay 2 Common
NC	Relay 2 Normally-closed
+	Positive of Power Supply 12-24VDC
-	Negative of Power Supply

TABLE 3



6.4. Wiring Diagrams (Please refer to the online G-ULTRA wiring diagram document for more diagrams)

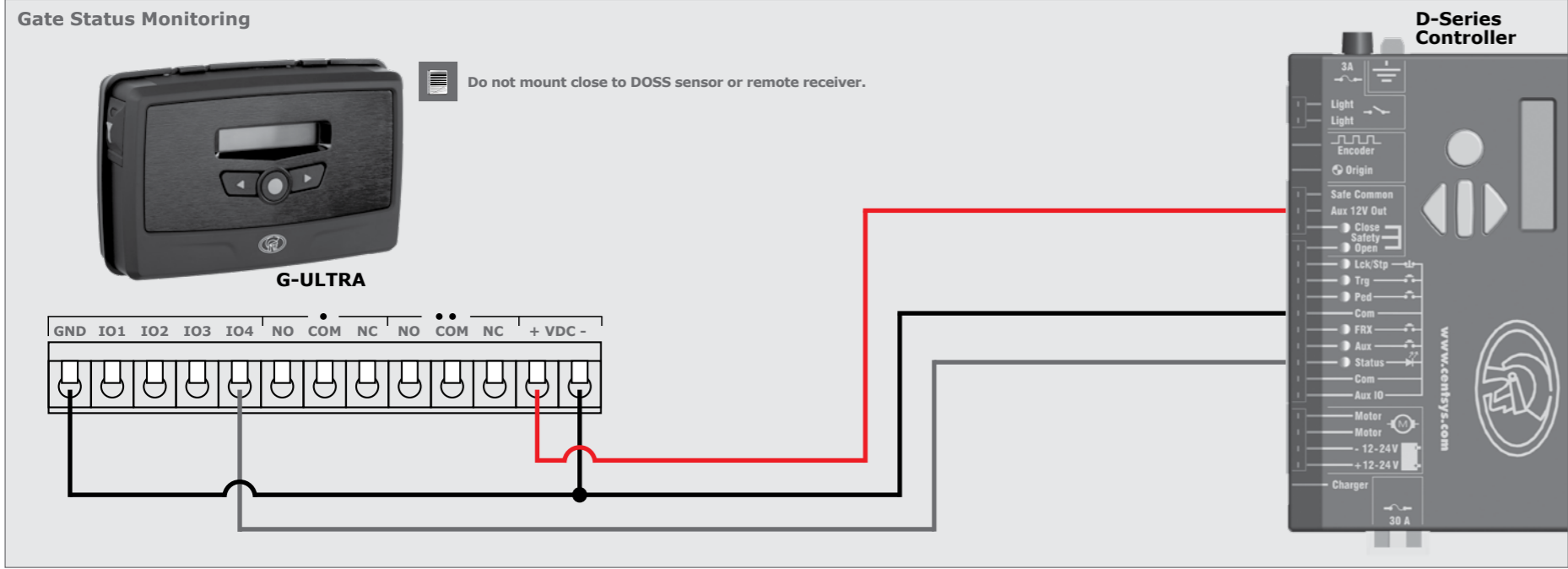


FIGURE 7

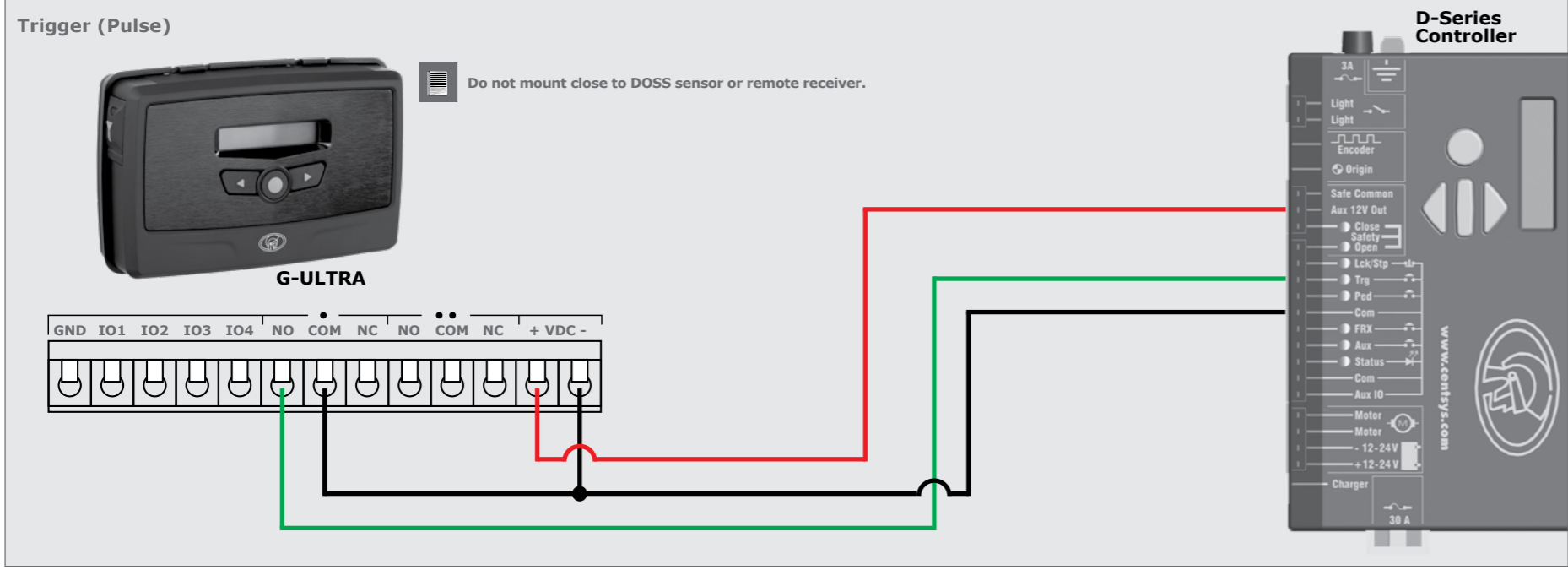


FIGURE 8

Looking for more wiring diagrams and product applications? Scan the QR code on your mobile device to be taken to our wiring diagram library.



6.5. Configuration of features

All features – both basic and advanced – can be easily, and remotely, configured via our G-WEB Mobile Phone App or our G-WEB Online Interface (<http://www.gweb.co.za>).

By simply logging on to the G-WEB App or G-WEB, you can add and delete users, specify text for input notifications and activations, modify device characteristics and many other features.

Download the G-WEB mobile App from your Smart Phone by navigating to the App store.

It would be necessary to register if you have not previously done so.

6.5.1. G-WEB Mobile App (Installers)

To download the G-WEB Mobile installer app, simply scan the QR code on your mobile device to be taken to the app in the applicable app store for your operating system. The G-WEB app gives you on-the-go access to a multitude of configuration and admin settings.



There is no need to download a third party QR Scanner, as there is a QR Scanner that is built into the G-WEB ULTRA Mobile App.

6.5.2. G-WEB Online

Your CENTURION GSM devices can be remotely managed and configured using the G-WEB online interface. Scan the QR code to be taken to G-WEB online.



6.5.3. MyCentsys Remote Mobile App (Users)

Download the MyCentsys Remote mobile app now for free by scanning the QR code on your mobile device. MyCentsys Remote lets you remotely control your GSM devices from your phone and receive push notifications for systems that are being monitored.

SCAN THIS QR CODE TO DOWNLOAD YOUR MANUALS, BROCHURES AND OUR LATEST APPLICATIONS FOR THE ULTIMATE SMART EXPERIENCE

